

INFLOW PLATES

For biological exhaust air treatment filters



Inflow plates for bio-filtration equipment: plastic is a better solution.

Cabka inflow plates for bio-filtration equipment are made of recycled plastic. For use in composting and wastewater treatment plants, the system is impressive for its simple, fast, low-cost installation. It consists of filter grate floors and variable foot components. Our recycled material stands up to chemicals, acids and microorganisms. Cabka filter grate floors are lighter and more ecologically sound than traditional equipment made of concrete or tropical ironwood.

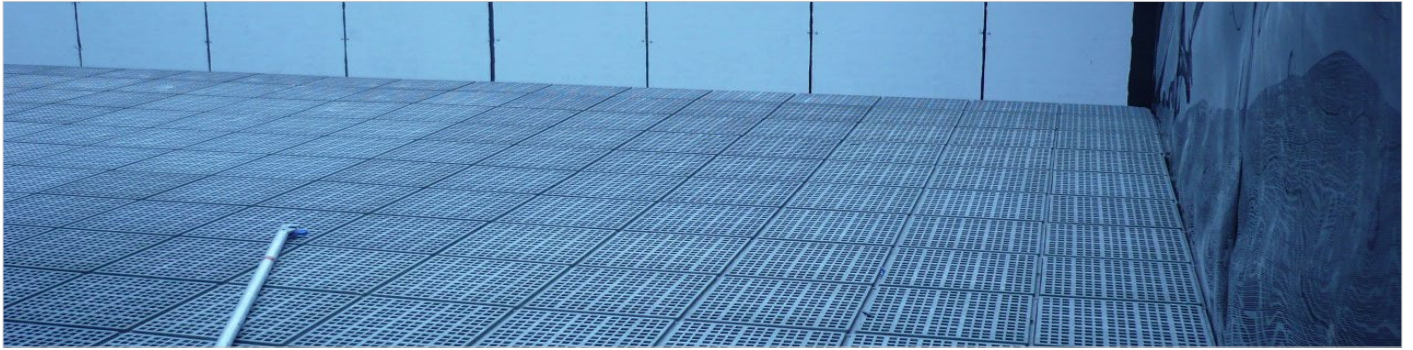
System made of grate floors and foot components

Cabka filter grate floors and foot components can be installed easily and quickly, and therefore cheaply. The filter component's light weight and manageable dimensions make it easy to transfer with no machinery and few personnel.

The Cabka filter grate floor has locking aids at the corners to hold the floor optimally to the foot components. Their perfectly fitting companion pieces are the pins for positioning on the upper side of the foot components.



Cabka inflow plates are very easy to install
and can withstand loads immediately.
No machines, few personnel.



Maximum stability and optimal ventilation with 30 percent open surface ...

Technical advantages

With 30 percent flow-through surface, Cabka filter floors have high air permeability. At the same time, the fine holes prevent biological filter mass from collecting.

The grate openings' 21.5 mm diameter prevents even relatively small coating or fill material from falling through the openings.

The loose tongue-and-groove fastening system compensates for length changes and stretching of the floor caused by temperature fluctuations

The installed inflow plates can be driven on by 2-ton vehicles, and even by 3-ton vehicles for short periods.

Cabka foot components can be purchased in various eleva

tion heights, so that the system can be adjusted to each individual project.

The foot elements' large-design elevation surfaces (260 mm in diameter) prevents the filter floors from hanging through when temperatures are especially high.

All components are made of dual-system recycled mixed plastic. This material is especially resistant to chemicals, acids and microorganisms.

Applications

Composting plants

Wastewater treatment plants

Waste recycling and treatment

Food industry





light and easy to install ...



2-ton trucks can drive on it immediately ...

Technical data:

Filter grate floor

Dimensions	500 x 500 x 80 mm	
Surface load (max.)	20 kPa = 20 kN/m ²	
Weight	7.5 kg	
Cross-sectional surface open	approx. 30%;	typical: 21.5 x 21.5 mm
Temperature range	0-50°C	

Foot component

Height	268 mm	402 mm	536 mm	670 mm	804 mm
Weight	7.5 kg	3.2 kg	4.0 kg	4.8 kg	5.6 kg

All component material of recycled mixed plastic

We reserve the right to modify the information provided here without advance notice.

CABKA GmbH & Co. KG
 Anne-Frank-Strasse 1
 07806 Weira | Germany

Tel_ +49.36484.645-0
 Fax_ +49.36484.645-28
 E-Mail_ ecoproducts@cabka.com

cabka.com